

Poles

GENERAL DESCRIPTION

Galvanized steel cylindrical columns, available in various lengths, specially designed for the installation of traffic lights and other signaling equipment.

MAIN FEATURES

- Manufactured in 2 mm thickness hot galvanized steel. Different thicknesses on demand.
- Optional finishing in dust polyester paint coating polymerized at 2300C.
- Standard height: 2400 mm. Other heights on demand.
- Standard diameter: 100 mm. Other diameters on demand.
- Possibility to choose between 2 different pole bases:
 - base plate for fixing by bolts (see Figure 1).
 - recessed in the ground (see Figure 2).
- Possibility to include 1 1/2" sleeve for traffic light mounting (see Figure 3).
- Includes connection box for easy access to cabling (see Figure 4).

CONSTRUCTION DETAILS AND DIMENSIONS (MM.)

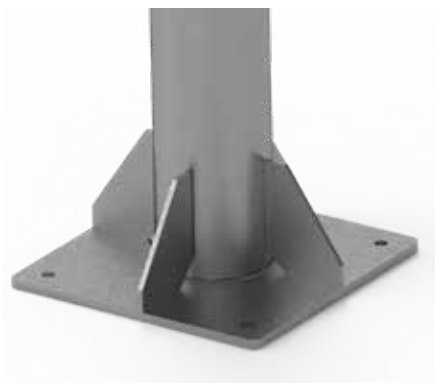


Figure 1: Pole with base plate

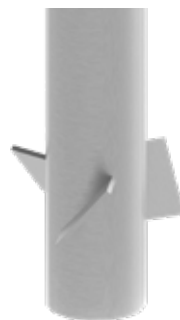


Figure 2: Built-in pole



Figure 3: Traffic Light mounting sleeve



Figure 4: Connection box

